



Advent House, Isaac Way, Manchester

£1,800 PCM

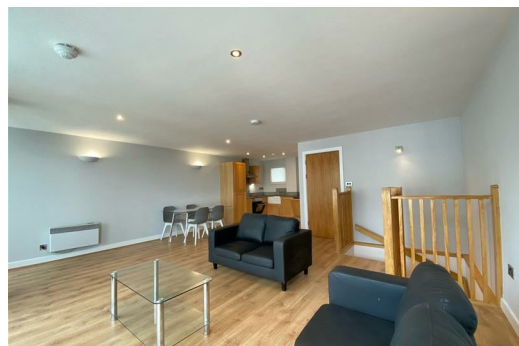
This standout development offers a superb three-bedroom, top floor duplex apartment in the highly sought-after Advent House. Ideally positioned on the edge of Manchester city centre, the location is perfect for enjoying both convenience and connectivity.

Arranged over two levels, this fully furnished apartment provides a well-presented interior with a practical and spacious layout throughout. There are three generously sized double bedrooms, with the master featuring a private en-suite, alongside a family bathroom and the added benefit of a separate WC. Two of the bedrooms also enjoy Juliet balconies, allowing for plenty of natural light and ventilation.

The real focal point of the home is the spacious open-plan living, kitchen and dining area, creating a bright and versatile environment ideal for both relaxing and entertaining. The fully fitted kitchen is complete with granite work surfaces, and the living space leads out onto a large private balcony.

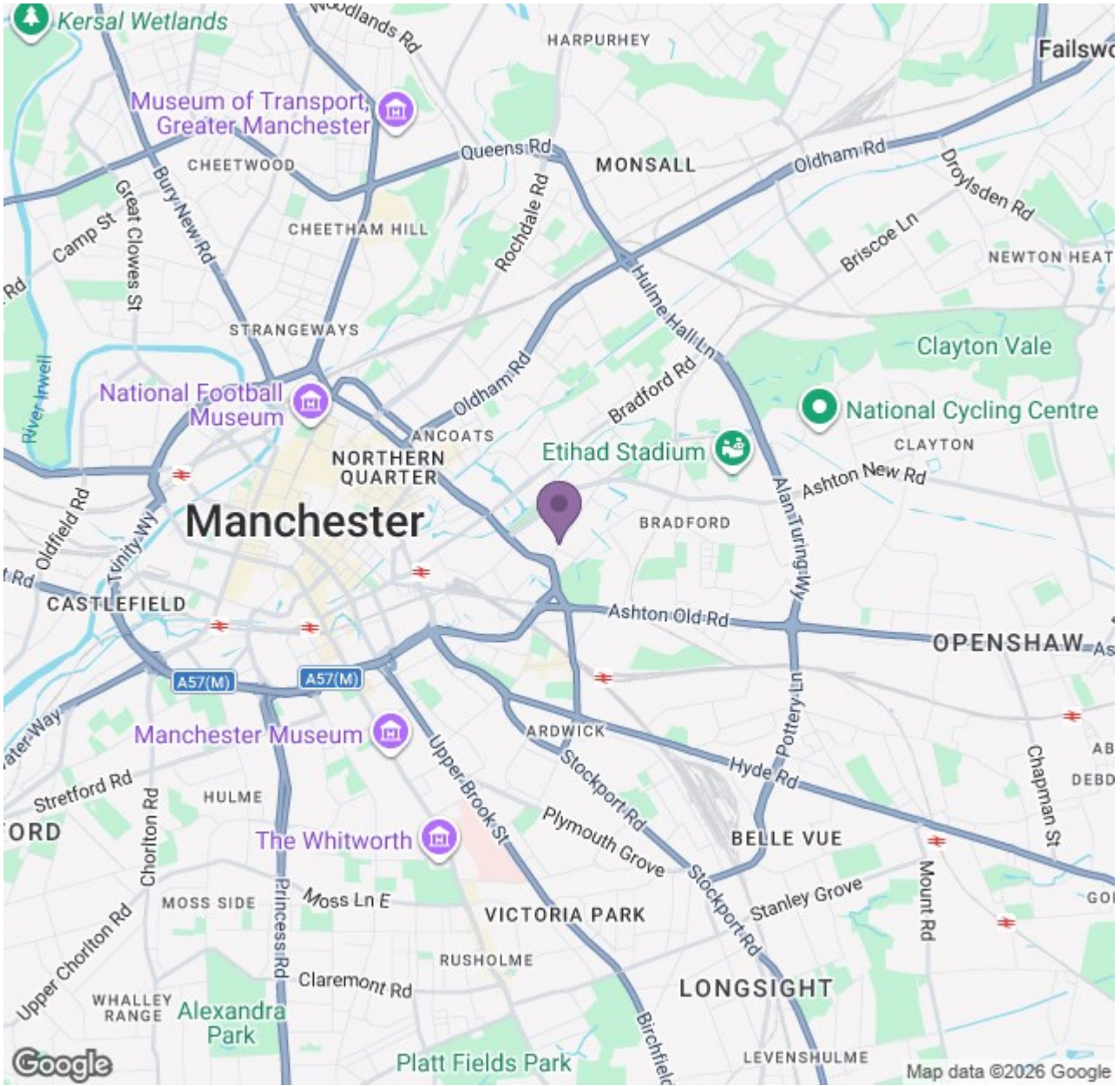
Location-wise, it couldn't be more convenient. Piccadilly Station is just a short distance away, making this apartment an excellent option for commuters, with Manchester city centre and the wider area easily within reach.

If you're interested in having a closer look, or have any questions, do get in touch.



Ascend

Built on higher standards



Energy Efficiency Rating		Environmental Impact (CO ₂) Rating	
Band	Score	Band	Score
A	92-100	A	1-23
B	81-91	B	24-47
C	69-80	C	48-74
D	55-68	D	75-100
E	39-54	E	101-150
F	21-38	F	151-200
G	1-20	G	201-250

Energy Efficiency Rating: **B** (Score: **61**)
 Environmental Impact (CO₂) Rating: **D** (Score: **68**)

Ascend

Built on higher standards